

# MT4 FX TRADER

## System Manual

### Risk warning

Before you begin trading on Real account please carefully consider your investment goals, risk and experience you have. It should be noted that Forex is a leverage based market. It should be remembered that leverage can work both in your advantage and disadvantage as well. Therefore there is high risk of losing a part or all of your financial input placed on your account and because of that you should remember to trade with the amount of money which you can lose without taking any influential financial damage.

### Disclaimer

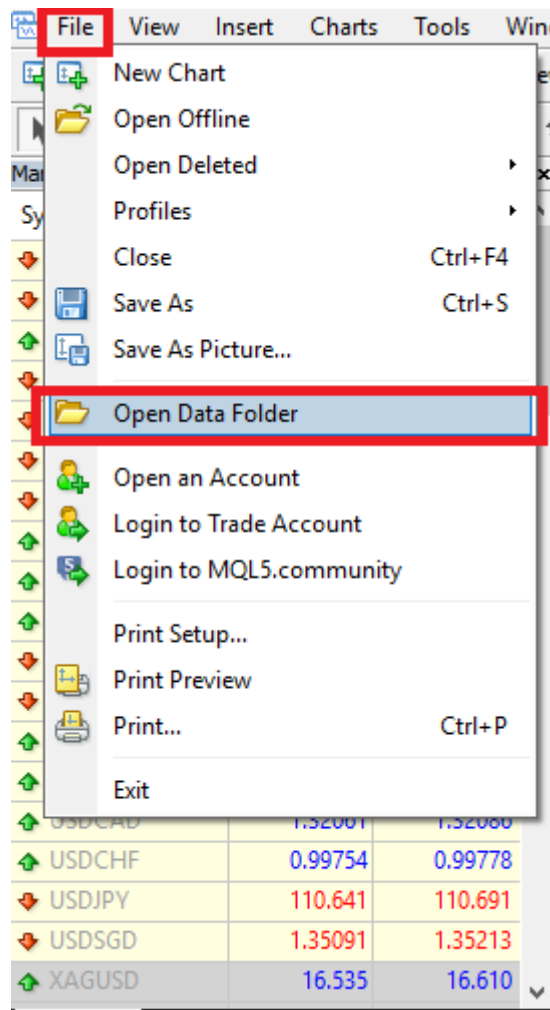
Signals generated by the system are not investment recommendations. All materials included on the website, as well as all system components (indicators, instruction manual) are for educational purposes only. Creators of the system will not take any responsibility for any profit or loss/damage caused by using the system.

Copyright © 2022 [www.mt4fxtrader.com](http://www.mt4fxtrader.com) All rights reserved.

Unless otherwise indicated, all materials on these pages are copyrighted by the mt4fxtrader.com. All rights reserved. No part of these pages, either text or image may be used for any purpose other than personal use. Therefore, reproduction, modification, in any form or by any means, electronic, or otherwise, for reasons other than personal use, is strictly prohibited without prior written permission.

# 1. Installation proces.

- Open your MT4
- Click 'File/Open Data Folder' from the top tab.



- Copy templates files to the 'Templates' folder.

config	15.06.2018 14:09
history	08.05.2018 16:03
logs	16.06.2018 09:40
MQL4	08.05.2018 16:01
profiles	13.06.2018 10:20
templates	15.06.2018 22:52
tester	13.06.2018 10:44
origin	08.05.2018 16:01

- Copy indicator files to the 'MQL4>Indicators' folder.

Experts	08.05.2018 16:02
Files	08.05.2018 16:01
Images	08.05.2018 16:01
Include	08.05.2018 16:01
Indicators	15.06.2018 22:29
Libraries	08.05.2018 16:02
Logs	16.06.2018 09:40
Presets	08.05.2018 16:01
Projects	08.05.2018 16:01
Scripts	08.05.2018 16:02

- Restart your MT4

- Open your favourite chart. Press the right mouse button and pick FXTRADER template.

### **FXTR1**

Fast mode is recommended for more advance traders. It produces the faster signals with increased risk-to-reward ratio. Pick this mode if you are scalper or you prefer fast daytrading swings.

### **FXTR2**

This mode is recommended for most traders (beginners as well experienced traders). It produces balanced signals with medium risk-to-reward ratio. It's great for typical daytrading.

### **FXTR3**

The third is the slowest mode. It provides conservative and the slowest signals. Use it if you do not have much screentime.

# System overview

System contains three indicators.  
(Every template has it's 'own' 3 indicators, so please use the system template, as it loads up all the necessary indicators depending on your trading mode).

1. Entry/Exit Indicator.
2. Bias indicator.
3. Trading dashboard.



# HOW DOES IT WORK.

## Entry Examples

### BUY TRADE/SELL TRADE

**We recommend to start with M15 TF to see how it works. Later you can switch to fastest M5 or M1.**

Software provides easy signals. When we see the blue bias indicator, we take BUY signals only.



The same goes for sell signals, when we see the red bias indicator, we take SELL signals only.

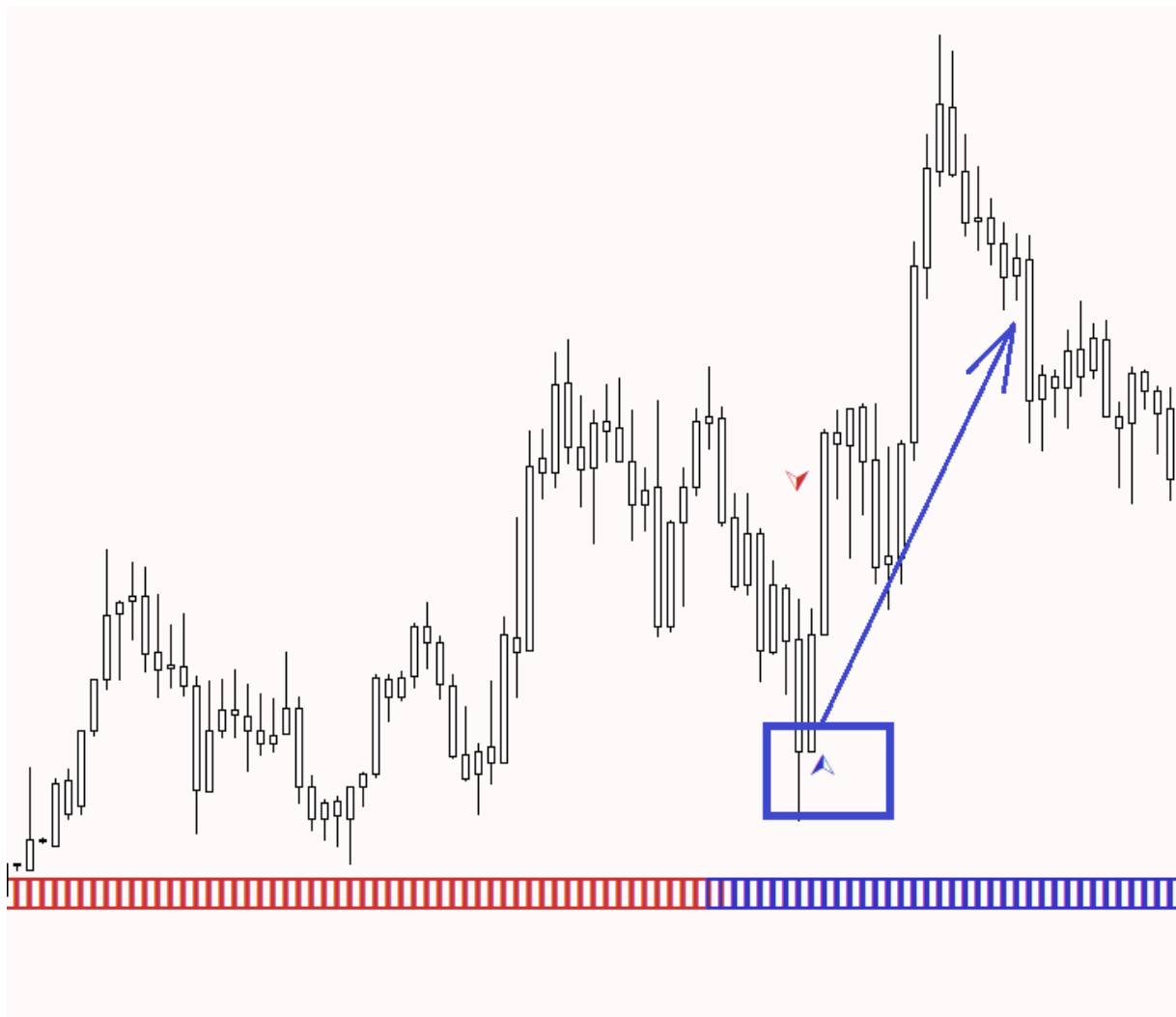


## HOW DOES IT WORK.

### Bias change

Sometimes when there is a sudden market change, or the price simply does not 'respect' our calculated bias, it can change during the day.

On the below example we can see that the day started 'red' while it turned into 'blue' later. Please don't worry, as bias indicator does not repaint or redraw. If it's calculations are 'wrong' for any particular day (as none of the indicators are always right), it will just change it's color, so you can still try to make pips this day.





## STOP LOSS

Stop loss order should be placed in the technically best place:

- the last swing high (for the SELL trade)
  - last swing low (for the BUY trade)
  - at the round number
- close to important support/resistance area.

## Handful of advice

- We recommend to use the system on M5 or M15 timeframe.
- M15 is the best timeframe to start with, as it provides less signals and it's easier to control the risk
- You can use our entry (arrow) indicator, but if you are looking for faster/slower or simply different signals, you can try with your own entry/exit favourite indicator.
- Do not overtrade, try to track 1-4 of your favourite trading instruments.

NEED ASSISTANCE?

LET US KNOW!

[SUPPORT@MT4FXTRADER.COM](mailto:SUPPORT@MT4FXTRADER.COM)