

X SPEED

Pinbar

User Manual

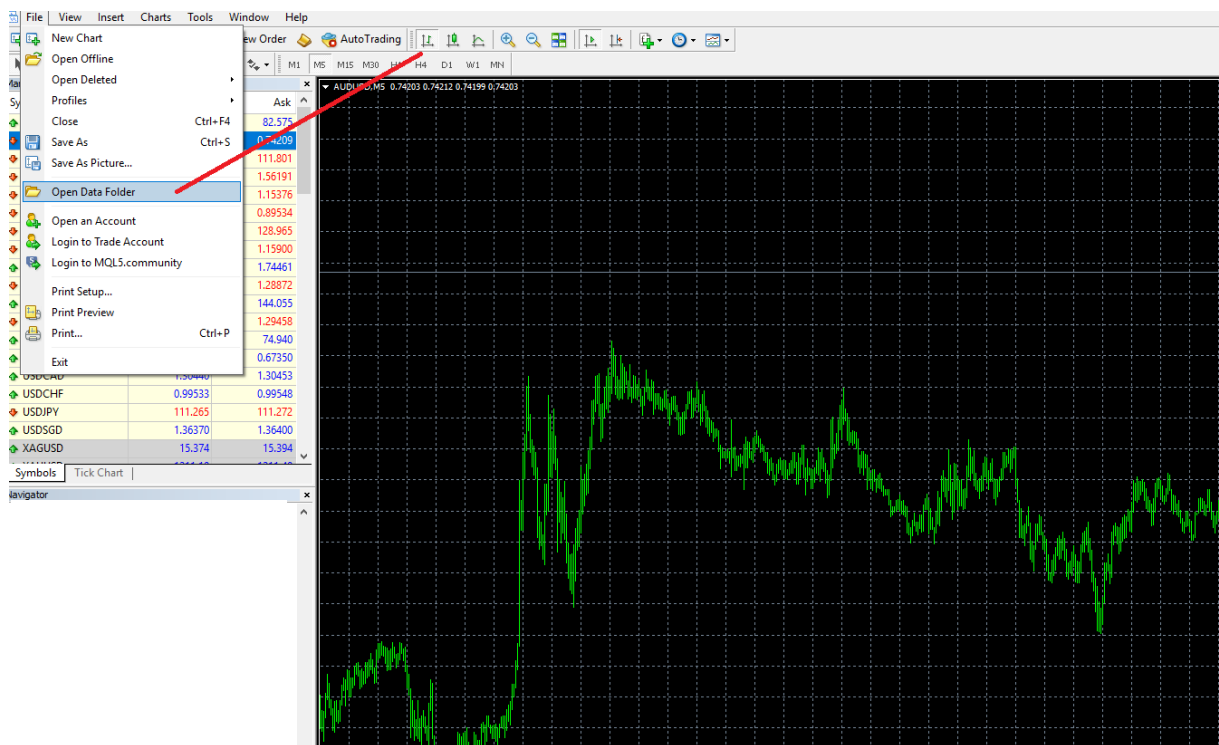
Risk warning

Before deciding to participate in the Forex market, you should carefully consider your investment objectives, level of experience and risk appetite. Most importantly, do not invest money you cannot afford to lose. There is considerable exposure to risk in any off-exchange foreign exchange transaction, including, but not limited to, leverage, creditworthiness, limited regulatory protection and market volatility that may substantially affect the price, or liquidity of a currency or currency pair.

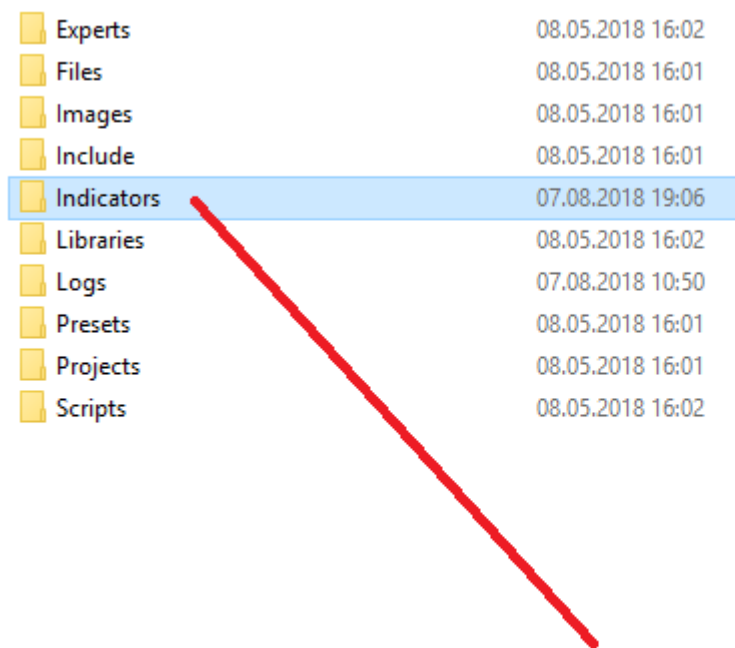
More over, the leveraged nature of forex trading means that any market movement will have an equally proportional effect on your deposited funds. This may work against you as well as for you. The possibility exists that you could sustain a total loss of initial margin funds and be required to deposit additional funds to maintain your position. If you fail to meet any margin requirement, your position may be liquidated and you will be responsible for any resulting losses.

Installation

- extract indicator files
- open your MT4 platform
- select the "File" tab from the drop-down menu and pick "Open Data Folder".



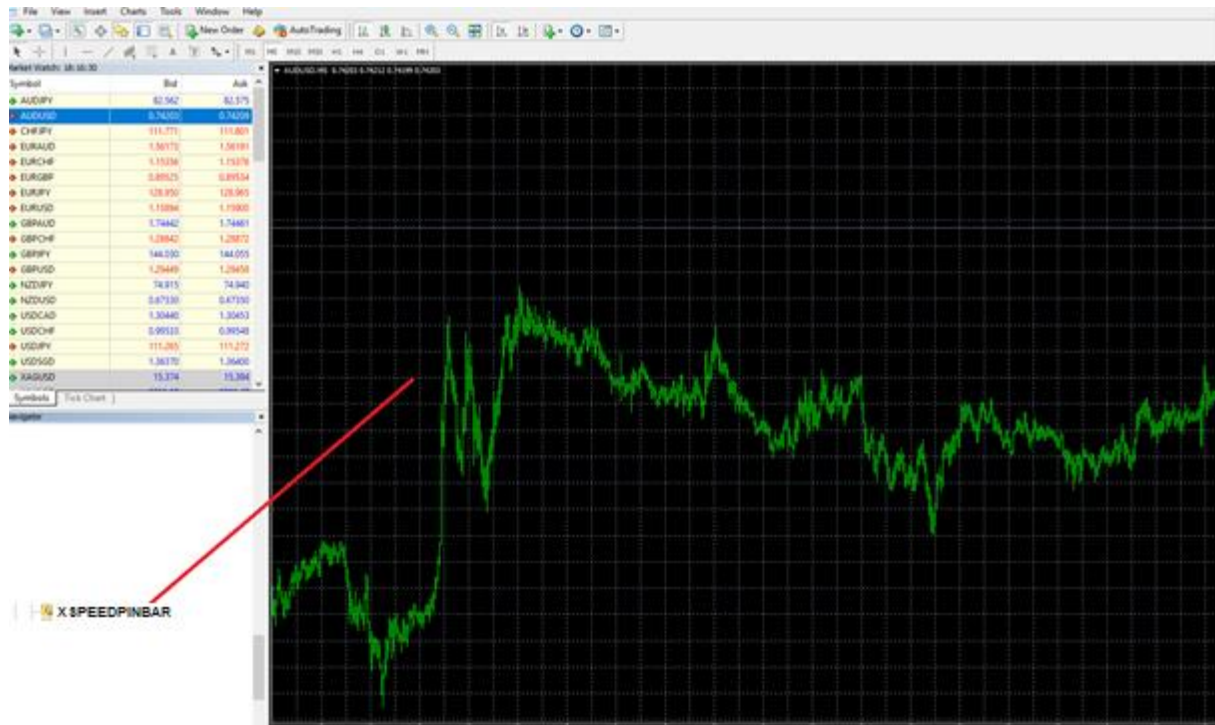
- in a new window, select the "MQL4" folder, and then "Indicators" folder.



- copy/paste XSpeedPinbar indicator here

- restart your MT4

- in the left bottom tab 'Navigator' find 'XSpeedPinbar' indicator



- double-click it and confirm with OK button.

- Indicator is ready to use.

NOTE: Indicator is analyzing the whole market on ONE chart. So it needs to be loaded on one chart only.

Signals

X Speed Pinbar is looking for pinbar signals on the selected charts.
Signals are very easy to read.

GREEN SIGNALS – Means BUY Signal (UP PINBAR)

RED SIGNALS – Means SELL Signal (DOWN PINBAR)

Every signal is confirmed with alert.

Indicator Settings

X Speed Pinbar is a support trading tool. It generates signals on any selected trading instruments and time intervals.

You can choose your own currency pairs, or commodities. After opening indicator you can change the analyzed instruments.

Custom Indicator - XSpeedPinbar

? ×

Common Inputs Colors Levels Visualization

Variable	Value
ab Sym1	EURUSD
ab Sym2	GBPUSD
ab Sym3	AUDUSD
ab Sym4	NZDUSD
ab Sym5	USDCAD
ab Sym6	USDJPY
ab Sym7	USDCHF
ab Sym8	BTCUSD
ab Sym9	ETHUSD
ab Sym10	XAUUSD
ab Sym11	XAGUSD
ab Sym12	UK100
ab Sym13	US30
ab Sym14	GER30
ab Sym15	AUS200

OK Anuluj Reset

NOTE: If your broker has non-standard pair names such as EURUSDpro or EURUSDi, you need to provide exactly the same names in the 'pairs' line so that the calculations are correct.

Timeframes

X Speed Pinbar analyzes any selected time intervals. If you want to add more timeframes to the analysis, you just need to change their value to 'true'. If you do not want an selected time interval just change its value to 'false'.

NOTE: We do not recommend to use M1 timeframe. Since it's the fastest TF, It generates a lot of noise. Even M5 is very fast for scalping (use M5 only if you are experienced trader).

The most balanced signals are generated on M15 and higher (so M15/M30/H1/H4/D1/W1/MN).

Custom Indicator - XSpeedPinbar ? X

Common Inputs Colors Levels Visualization

Variable	Value
MN	false
W1	true
D1	true
H4	true
H1	true
M30	true
M15	true
M5	true
M1	true

OK Anuluj Reset