

# X SMART TRADER

## System Manual

### **Risk warning**

Before you begin trading on Real account please carefully consider your investment goals, risk and experience you have. It should be noted that Forex is a leverage based market. It should be remembered that leverage can work both in your advantage and disadvantage as well. Therefore there is high risk of losing a part or all of your financial input placed on your account and because of that you should remember to trade with the amount of money which you can lose without taking any influential financial damage.

### **Disclaimer**

Signals generated by the system are not investment recommendations. All materials included on the website, as well as all system components (indicators, instruction manual) are for educational purposes only. Creators of the system will not take any responsibility for any profit or loss/damage caused by using the system.

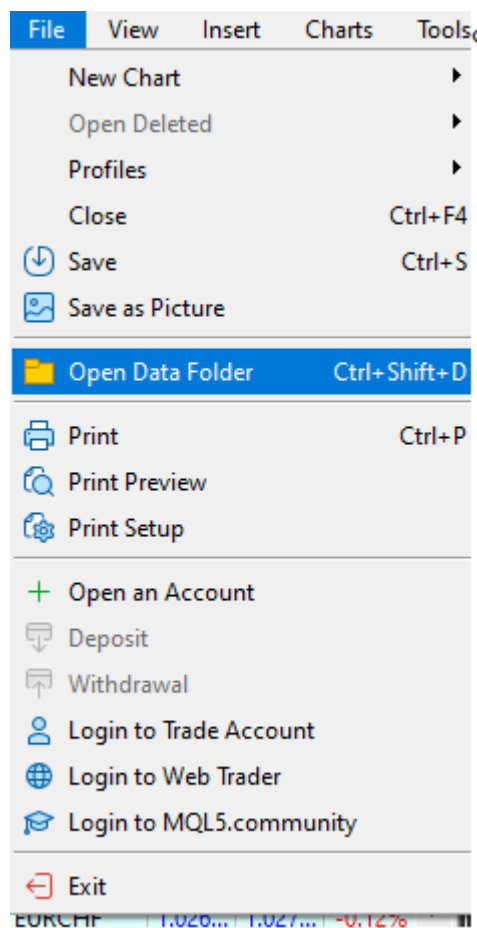
**Copyright © 2022 All rights reserved. [www.xsmtrader.com](http://www.xsmtrader.com)**

Unless otherwise indicated, all materials on these pages are copyrighted by the fxvector.net. All rights reserved. No part of these pages, either text or image may be used for any purpose other than personal use. Therefore, reproduction, modification, in any form or by any means, electronic, or otherwise, for reasons other than personal use, is strictly prohibited without prior written permission.






# 1. Installation proces.

- Open your MT5













- Click 'File/Open Data Folder' from the top tab.



- Copy templates files to the 'MQL5>Profiles>Templates' folder.

 Charts	22.03.2022 10:13
 Community	22.03.2022 10:14
 SymbolSets	22.03.2022 10:13
 Templates	22.03.2022 10:14
 Tester	22.03.2022 13:02

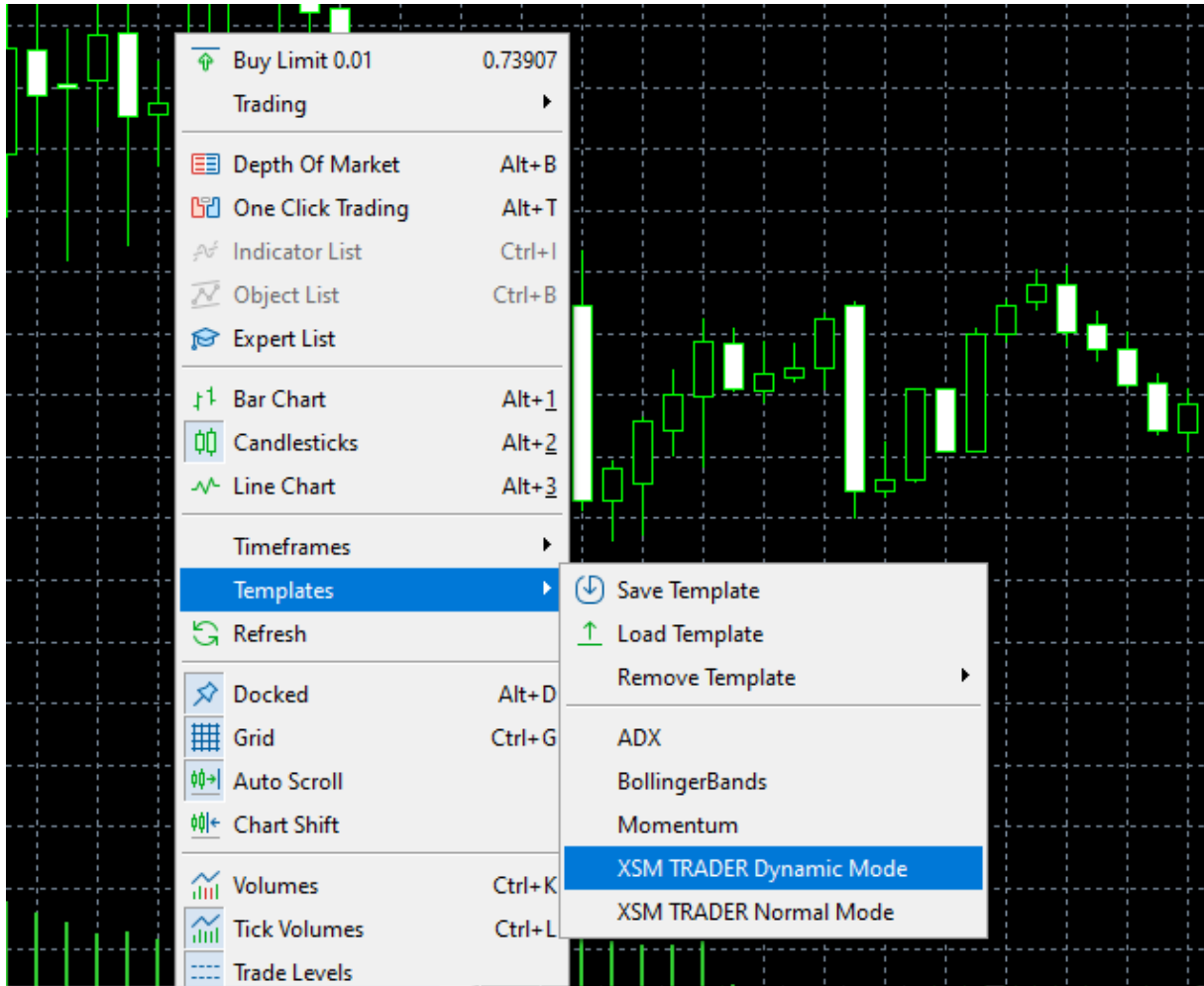
- Copy indicator files to the 'MQL5>Indicators' folder.

 Experts	22.03.2022 10:13
 Files	22.03.2022 10:13
 Images	22.03.2022 10:13
 Include	22.03.2022 10:13
 Indicators	22.03.2022 10:14
 Libraries	22.03.2022 10:13
 Logs	22.03.2022 10:17
 Presets	22.03.2022 10:13
 Profiles	22.03.2022 10:14
 Scripts	22.03.2022 10:13
 Services	22.03.2022 10:13
 experts.dat	22.03.2022 13:02

- Restart your MT5

- Open your favourite trading chart and right click on it.

Pick: Templates



You will see 2 templates there:

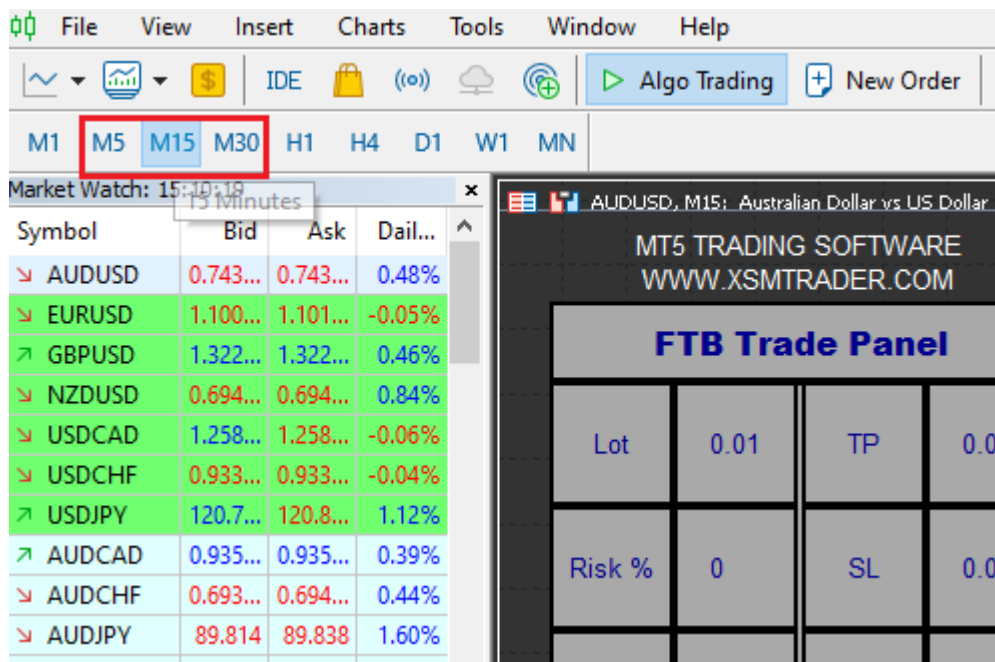
- XSM TRADER Dynamic Mode

- XSM TRADER Normal Mode

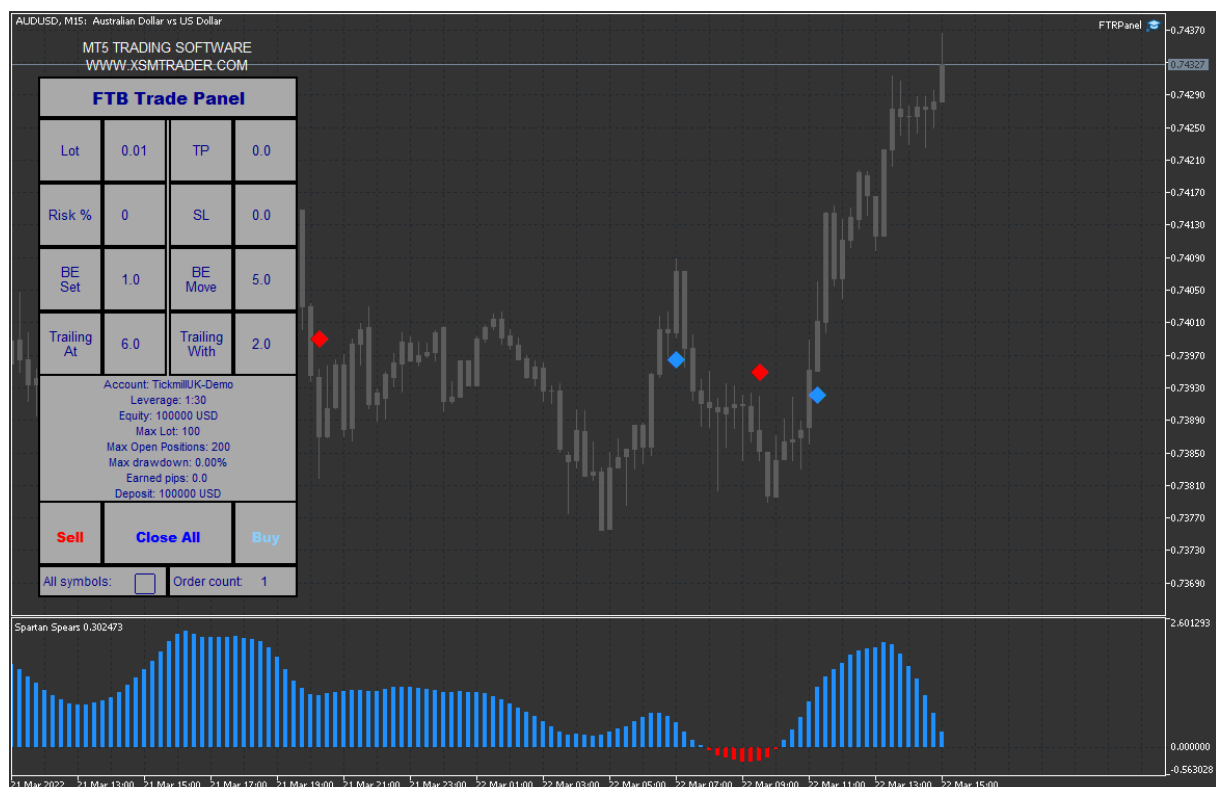
Dynamic mode provides faster signals with bigger potential profit and increased risk.

Normal mode provides standard, balanced signals for any type of trader.

After template selection please switch the timeframes once, as it will load up all the settings and data.



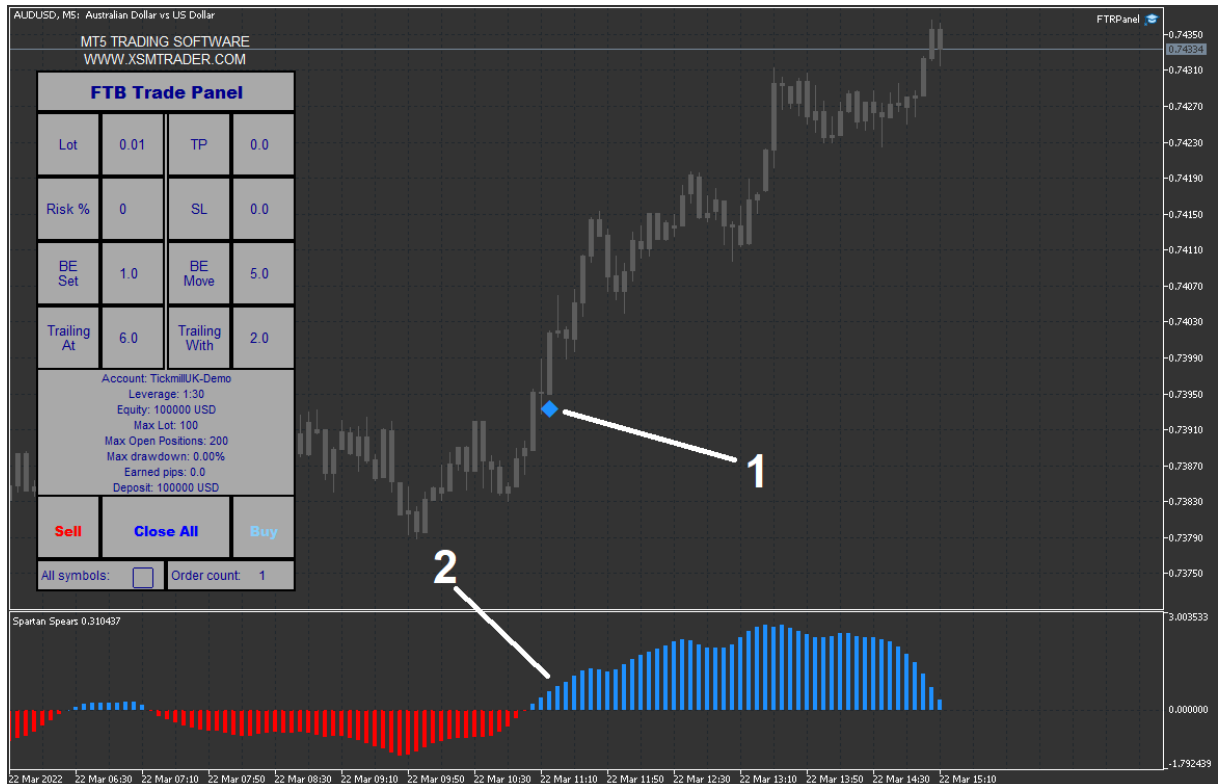
Now, software is ready for trading 😊



## ENTRY EXAMPLE (BUY SIGNAL)

Signals are very easy to read. We need to combine two elements:

1. Entry signal.
2. Trend filter.



For fully confirmed signal we need both colors to agree. So when you will receive BUY Diamond on the chart, check if the bottom trend filter is the same color as the signal (so also blue).

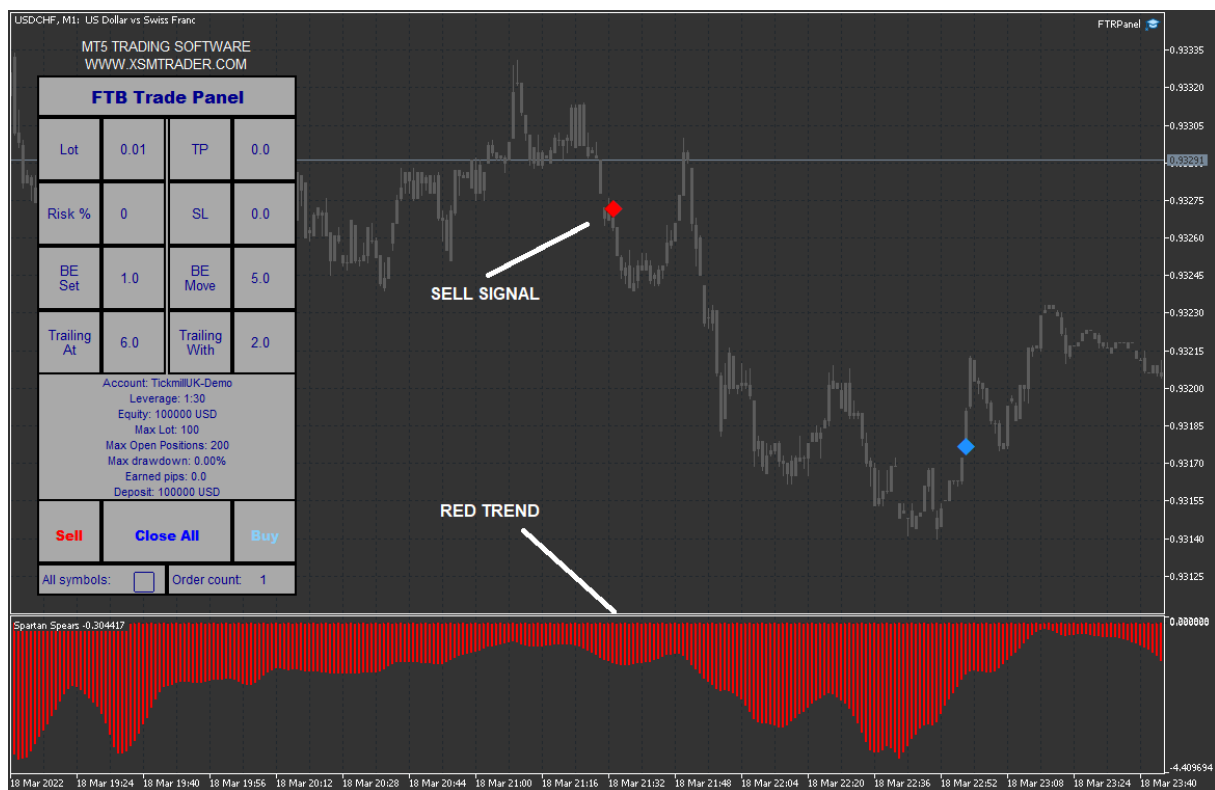
As an exit you can use opposite signal (red diamond). You don't need to confirm it with the bottom indicator.

## ENTRY EXAMPLE (SELL SIGNAL)

Sell signal works pretty the same way as buy signal, we just look for red color now.

So we need:

- red diamond
- red bottom trend



When to exit? It's also simple.  
Wait for an opposite diamond (blue one).

Exit signal does not have to be confirmed with the bottom trend indicator.





# Trading Assistant

The software contains also trading assistant expert.  
It's a great tool for one click opening/closing and managing all the trades in one place.

To make it work, please make sure you have 'Algo Trading' switched to 'green' on the top of your MT5.



IF YOU NEED ANY ASSISTANCE LET US KNOW!

[support@xsmtrader.com](mailto:support@xsmtrader.com)