

TITAN X PRO

System Manual

Risk warning

Before you begin trading on Real account please carefully consider your investment goals, risk and experience you have. It should be noted that Forex is a leverage based market. It should be remembered that leverage can work both in your advantage and disadvantage as well. Therefore there is high risk of losing a part or all of your financial input placed on your account and because of that you should remember to trade with the amount of money which you can lose without taking any influential financial damage.

Disclaimer

Signals generated by the system are not investment recommendations. All materials included on the website, as well as all system components (indicators, instruction manual) are for educational purposes only. Creators of the system will not take any responsibility for any profit or loss/damage caused by using the system.

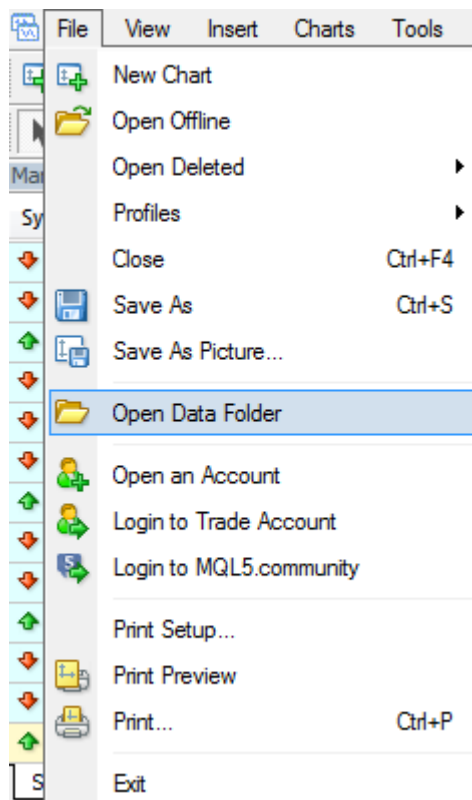
Copyright © 2019 www.titanxpro.com All rights reserved.

Unless otherwise indicated, all materials on these pages are copyrighted by the fxvortex.net. All rights reserved. No part of these pages, either text or image may be used for any purpose other than personal use. Therefore, reproduction, modification, in any form or by any means, electronic, or otherwise, for reasons other than personal use, is strictly prohibited without prior written permission.

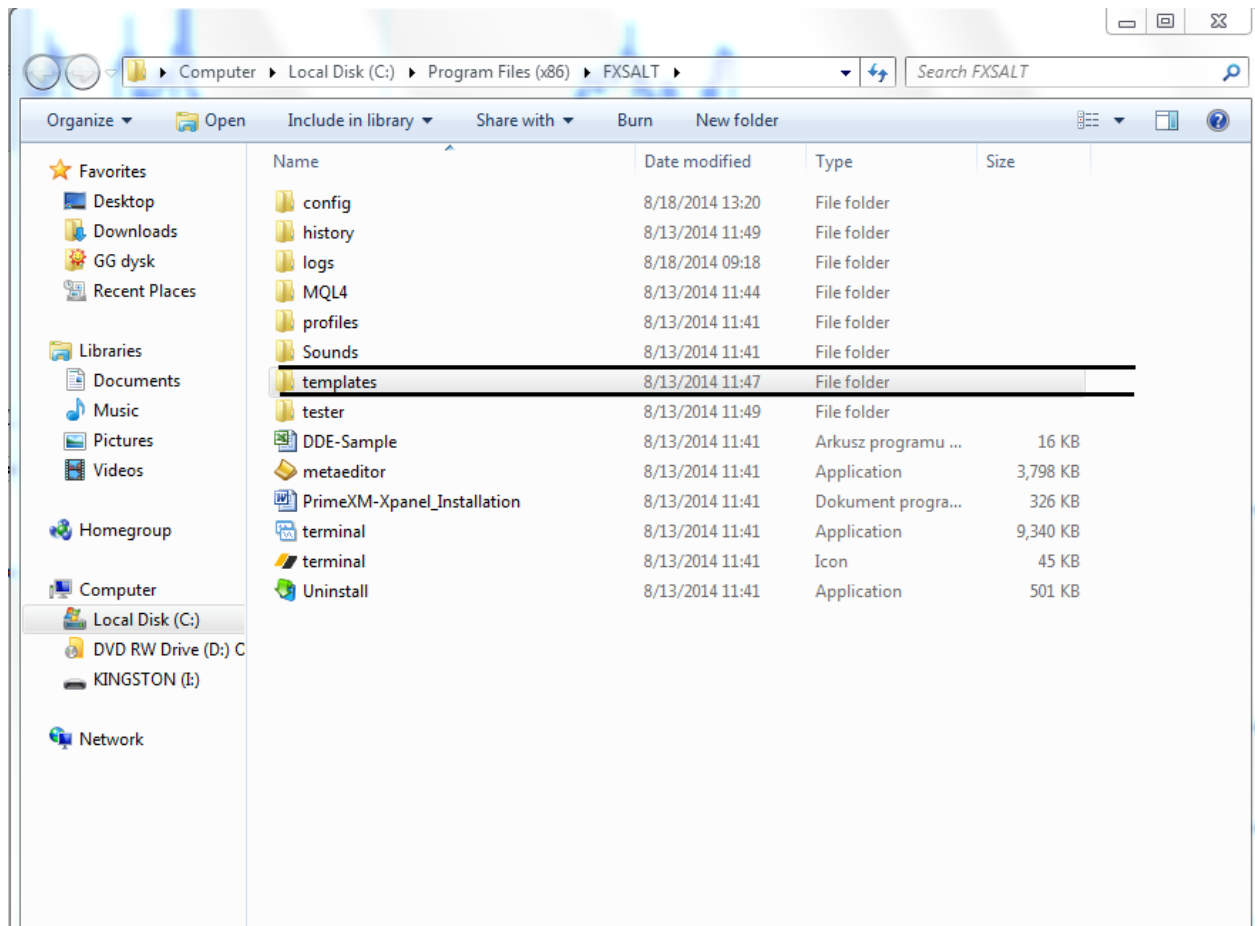
1. Setting up MT4.

Open your MT4 platform.

Go to 'File' → 'Open data folder'

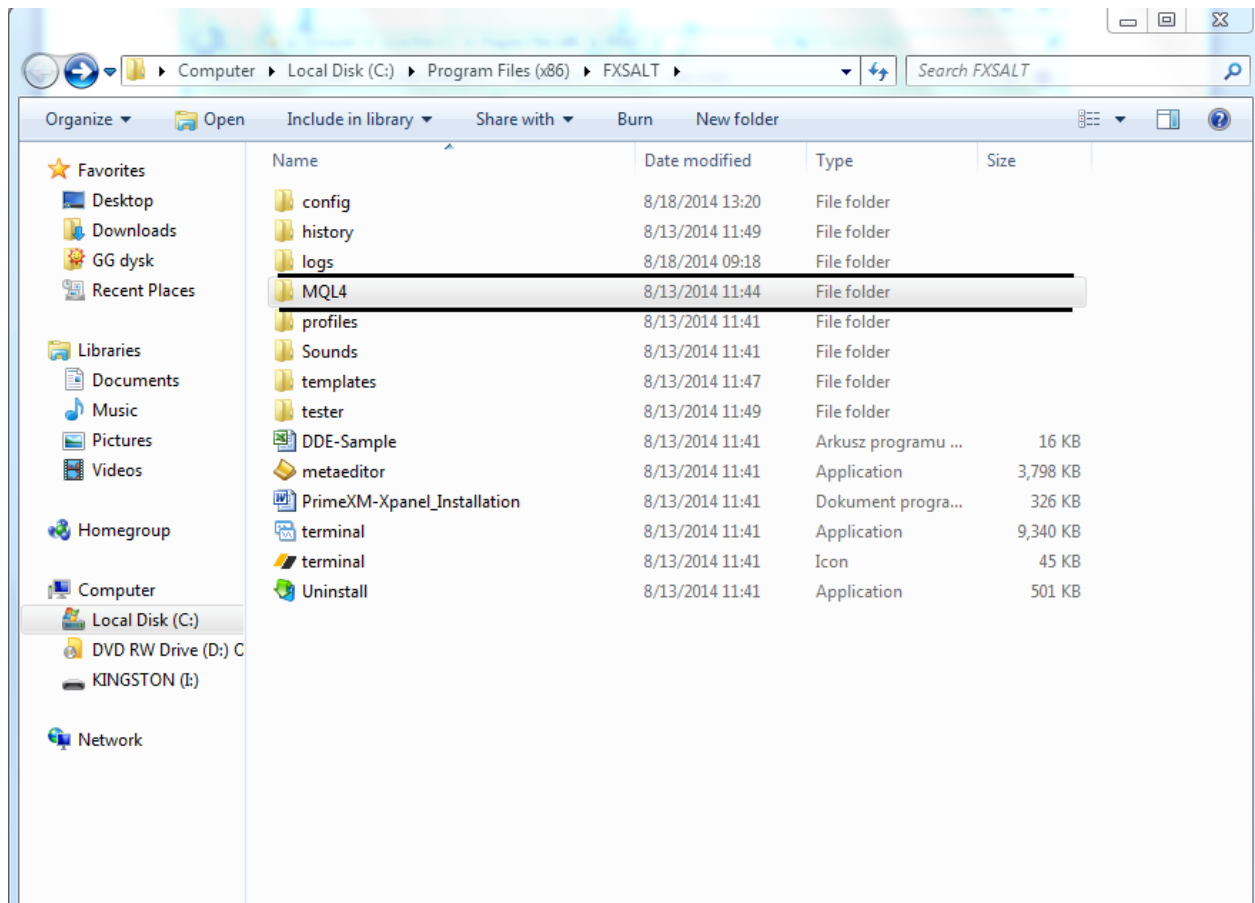


Go to 'templates' folder and copy 4 x templates files there.



Go back to main folder and choose 'MQL4' → 'Indicators' folder.

Copy → paste 4 x indicator files.



Restart MT4 platform.

2.Templates

System provides 3 + 1(Dashboard) different templates depending on your risk appetite.

TitanXpro1 – is the safest one. The risk is small, entries are a bit slower but they are more filtered than other signals.

Pick this template if you expect smaller, but more sure profits.

TitanXpro2– is the most balanced template. Risk is higher, entries are faster than previous template, but still at safe/medium risk level.

This mode is ideal for typical daytrading.

TitanXpro3– is the most aggressive template. It provides the faster signals with increased risk.

Pick this one only if you are experienced trader, or when you have spent sufficient time with the trading system.

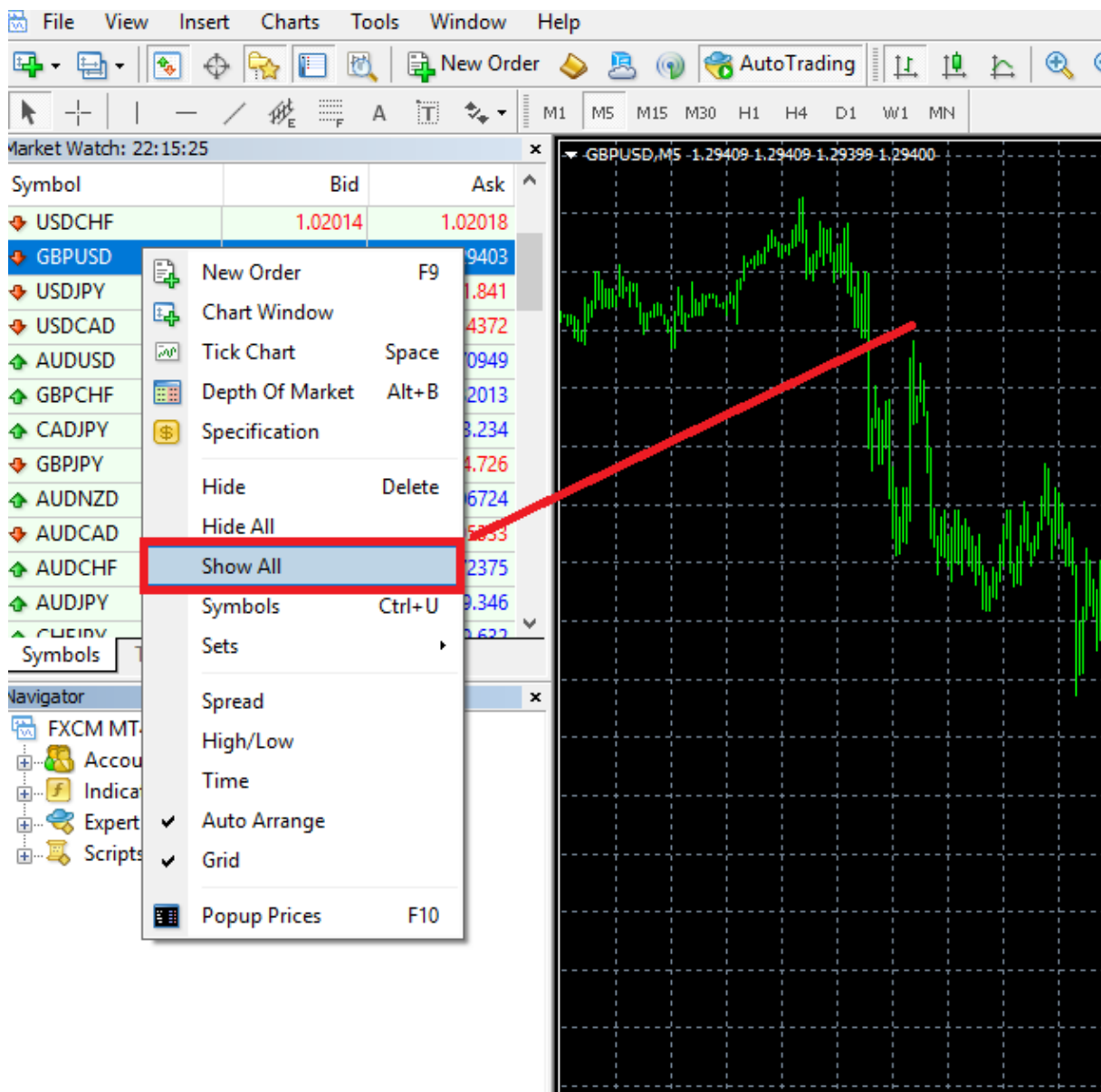
TitanXproDASH – is used to place currency dashboard on the chart.

3.HOW TO START?

STEP1

The first thing you need to do is to make every pair available in your MT4 for proper currency calculations.

1. Open your MT4.
2. Click the right mouse button on any pair in market watch and pick: 'Show ALL'.



STEP2

The next thing you need to do is to put the dashboard on the chart.

1. Open any chart (trading instrument and timeframe doesn't matter).
2. Right click on the chart and pick template: 'TitanXproDASH'.



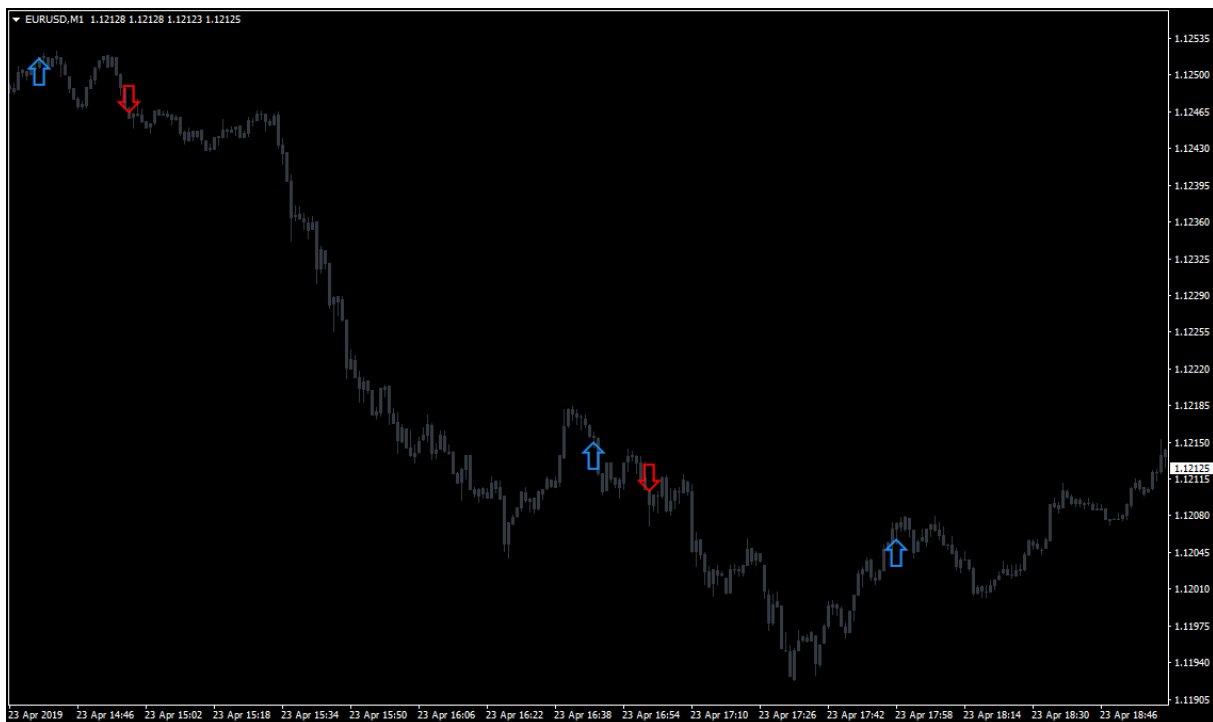
You will see currency dashboard on your chart. This will be your main chart, where you can watch and pick strong/weak currency pairs.

NOTE: Currency dashboard can be placed on any number of charts, but since it needs to collect, analyze and provide the data from the whole market it may be too much resources consuming (if you are using older PC). If you trade with newer and faster PC, you can place it on any number of charts.

STEP3

Pick your favourite trading instruments.

1. Open your favourite trading pairs.
2. Right click on the chart and pick template: TitanXpro1/2/3 (depending on your risk appetite).

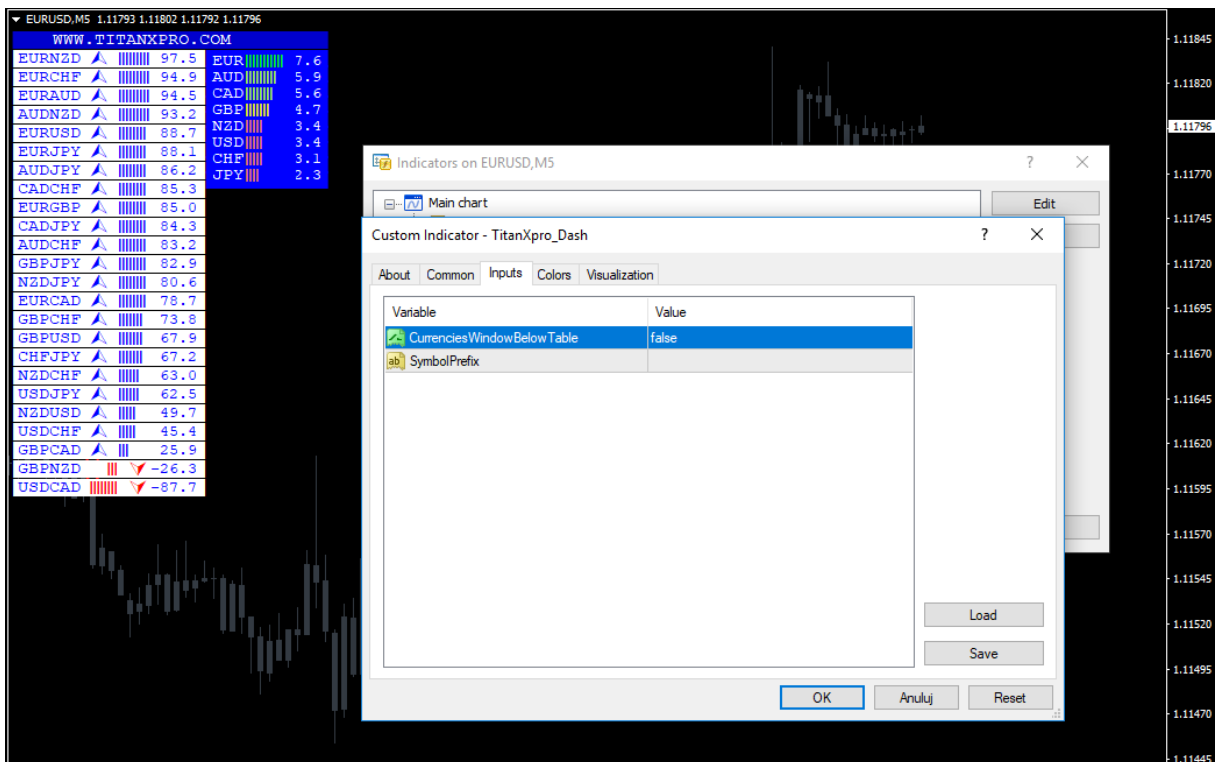
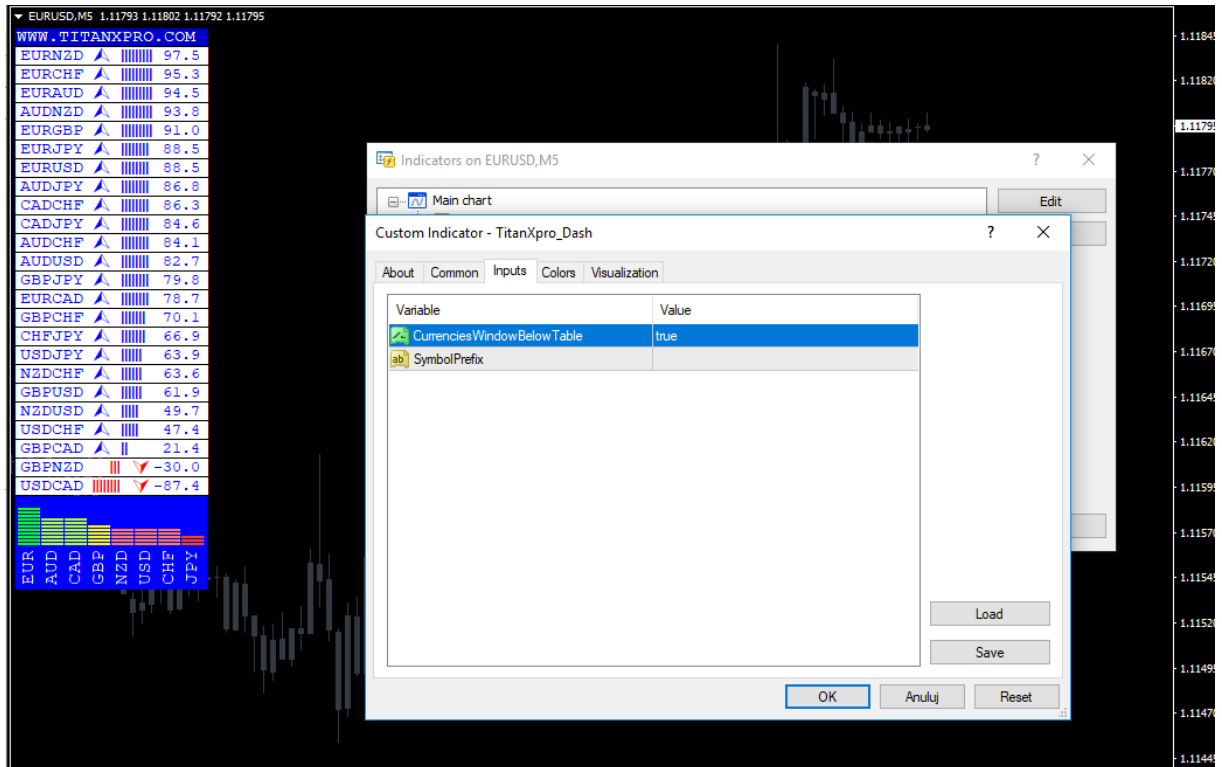


You will see BUY/SELL signals.

NOTE: It is recommended to open your 3-6 favourite trading pairs with lowest spread and wait for signals confirmed by dashboard. If the market picks the different pairs, just follow the currency dashboard or come back on the next trading session.

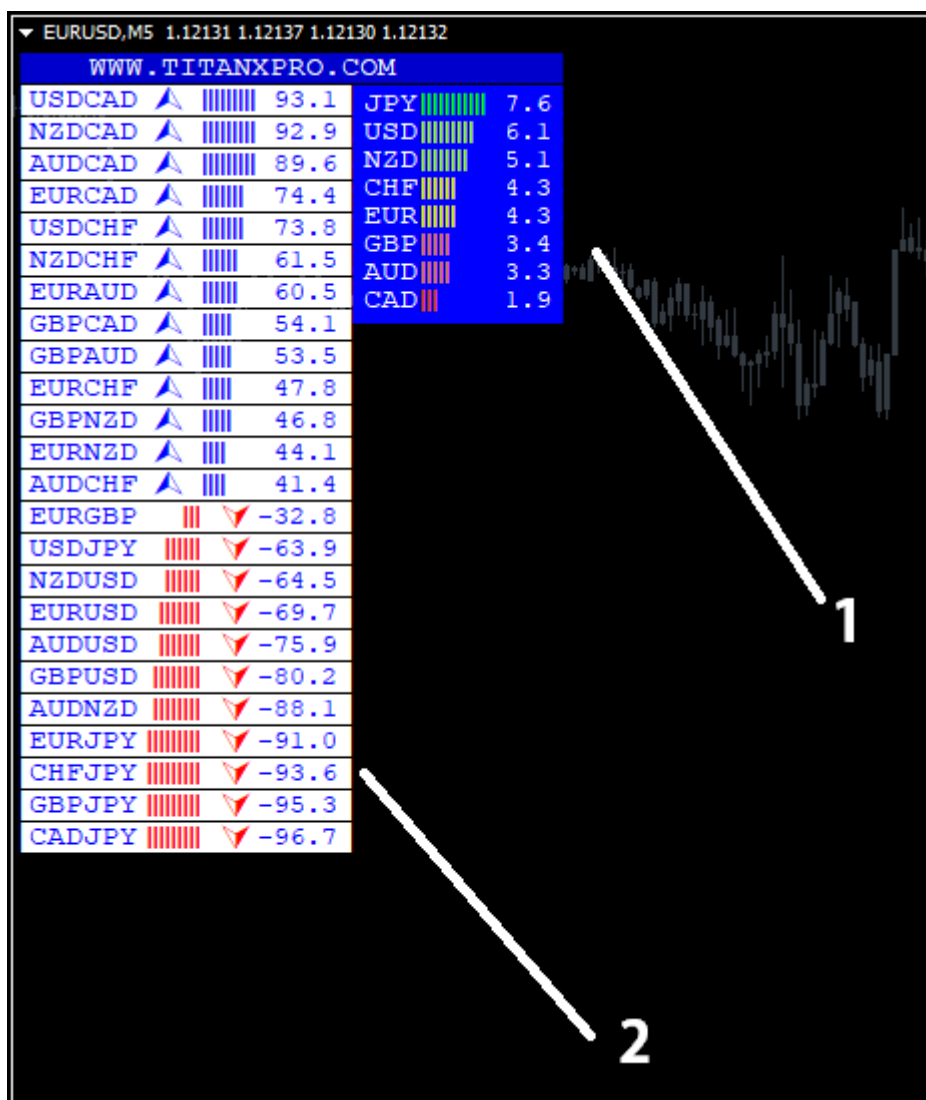
MARKET OVERVIEW WINDOW

Depending on your preferences and also your screen size, you can change the position of the 'market overview window'. Just get into the settings and change to true/false.



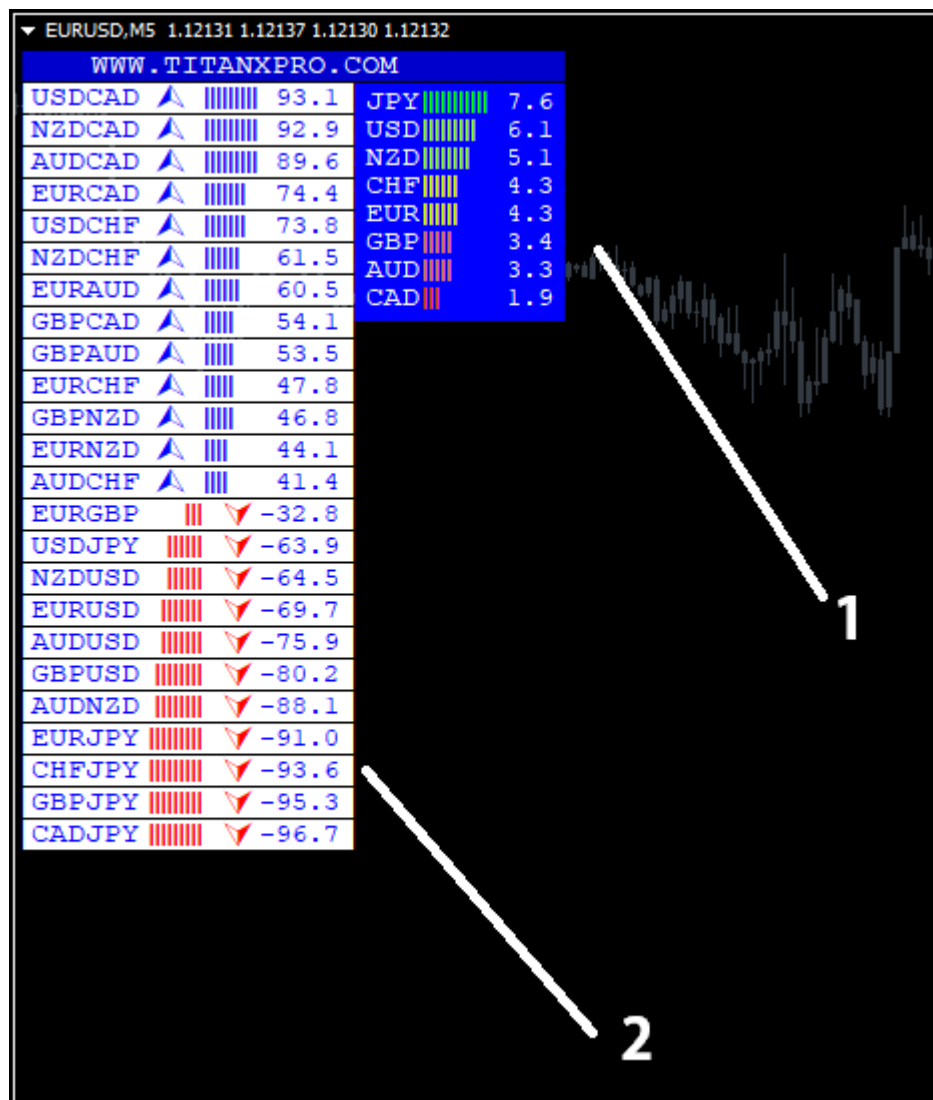
4. TRADES EXAMPLES. SELL TRADE.

The main part of the system is trading dashboard. It will provide all the data about currencies in general and specific currency pairs.



1. Quick market overview.
2. Weak/strong currency pairs.

Before you open any trade check how currencies looks like (1).

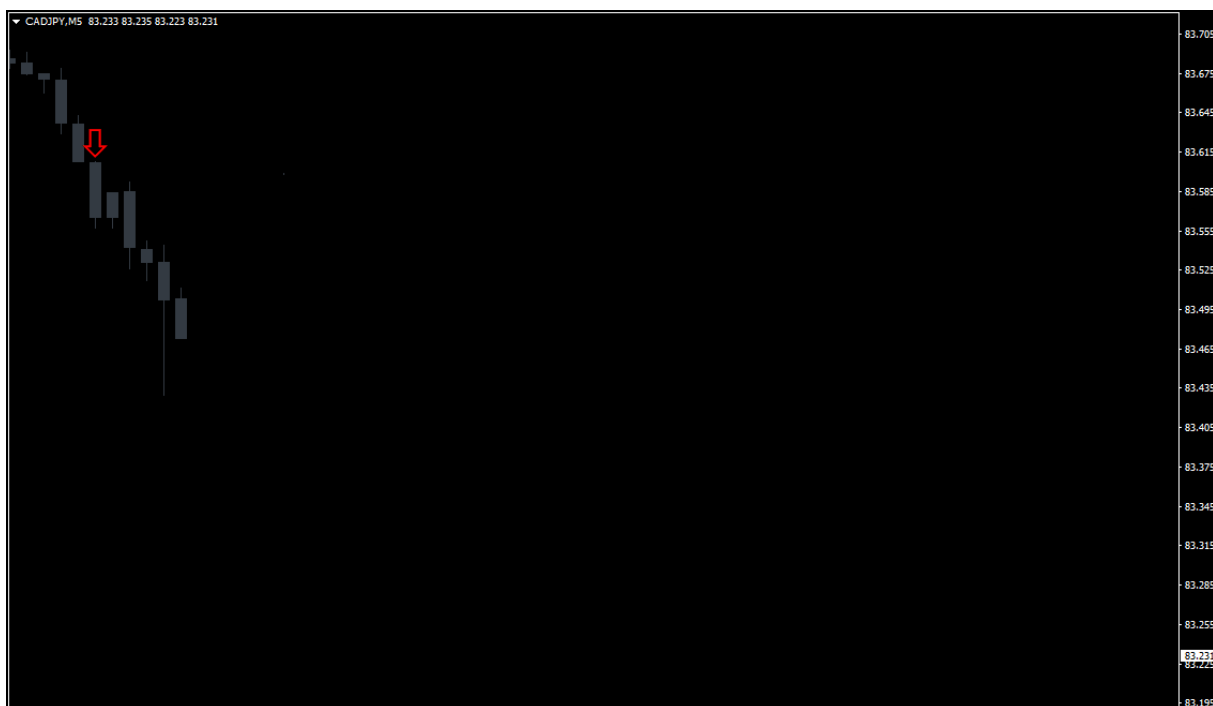


CAD is the weakest, JPY is the strongest.

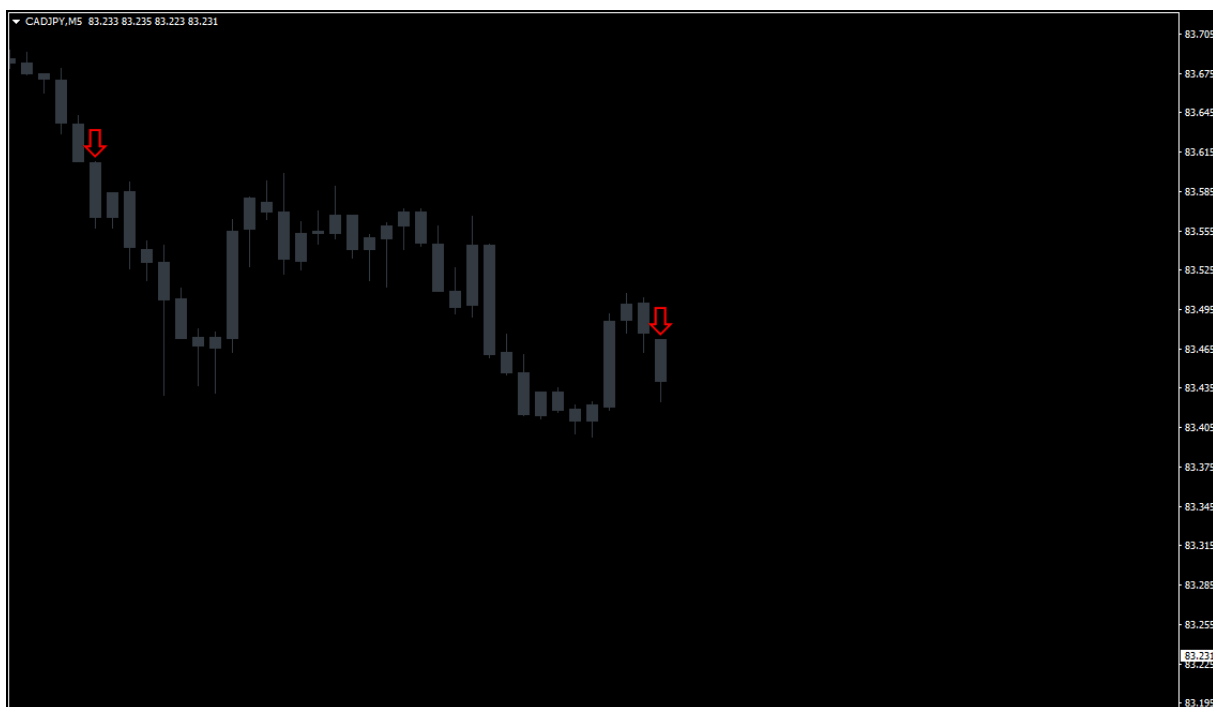
Now, let's see specific pairs (2).

CADJPY is very weak. Let's take a look at this pair.

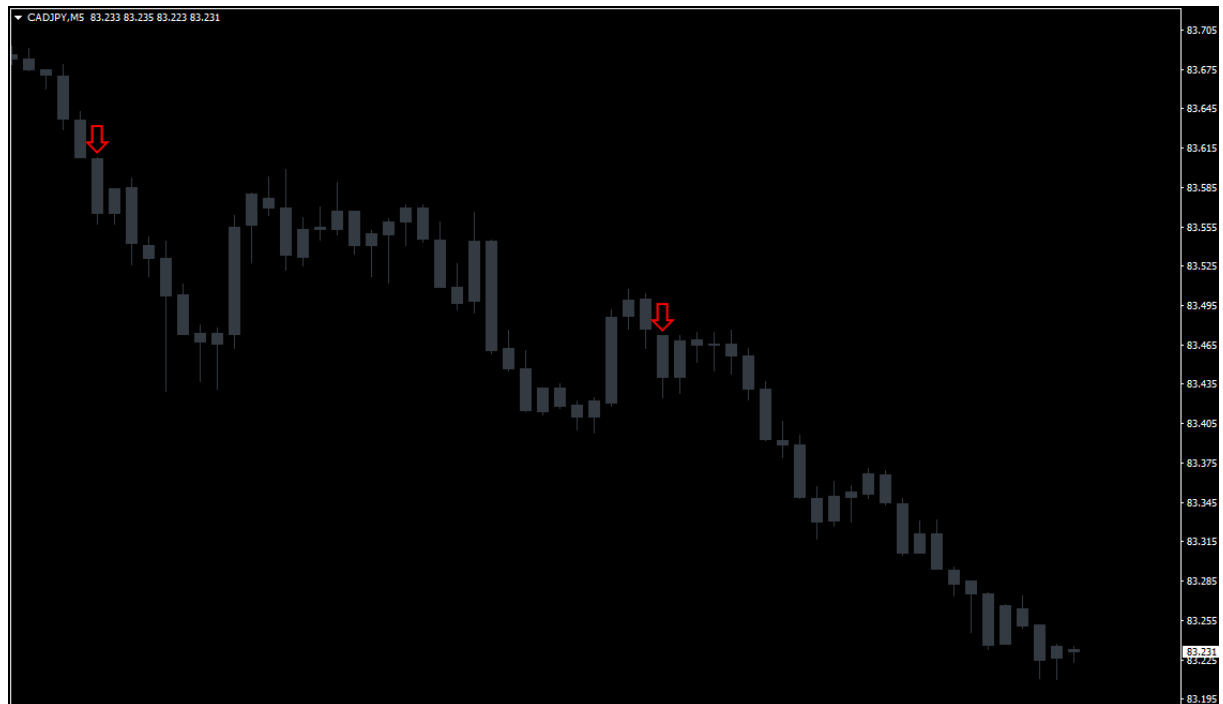
We can see that the pair is moving down very fast. Let's wait for another sell signal (down red arrow).



Few candles later we can see another sell signal. (You will be notified by alert when it happens). This is a valid sell signal.

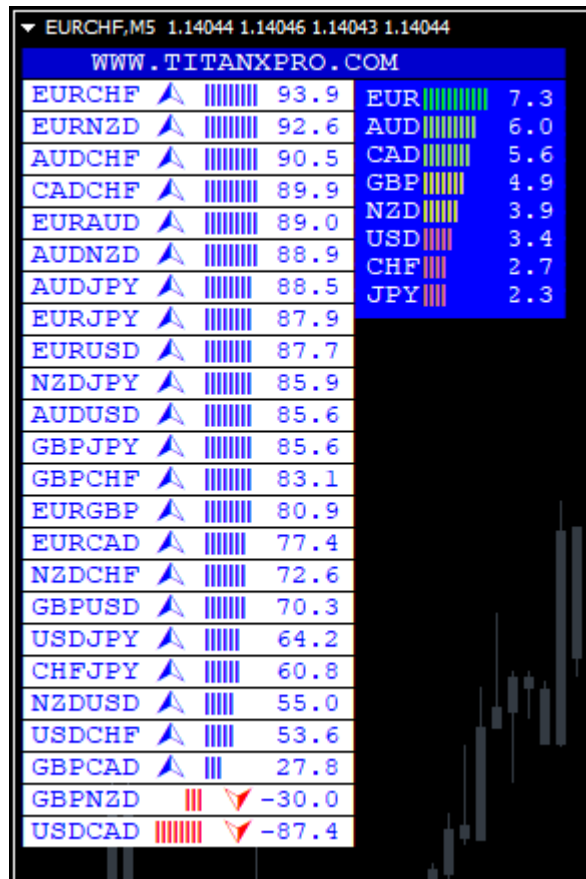


As we can see the market generated another down swing. Since CAD was the weakest currency and JPY the strongest, our best pick was sell trade on CADJPY pair.

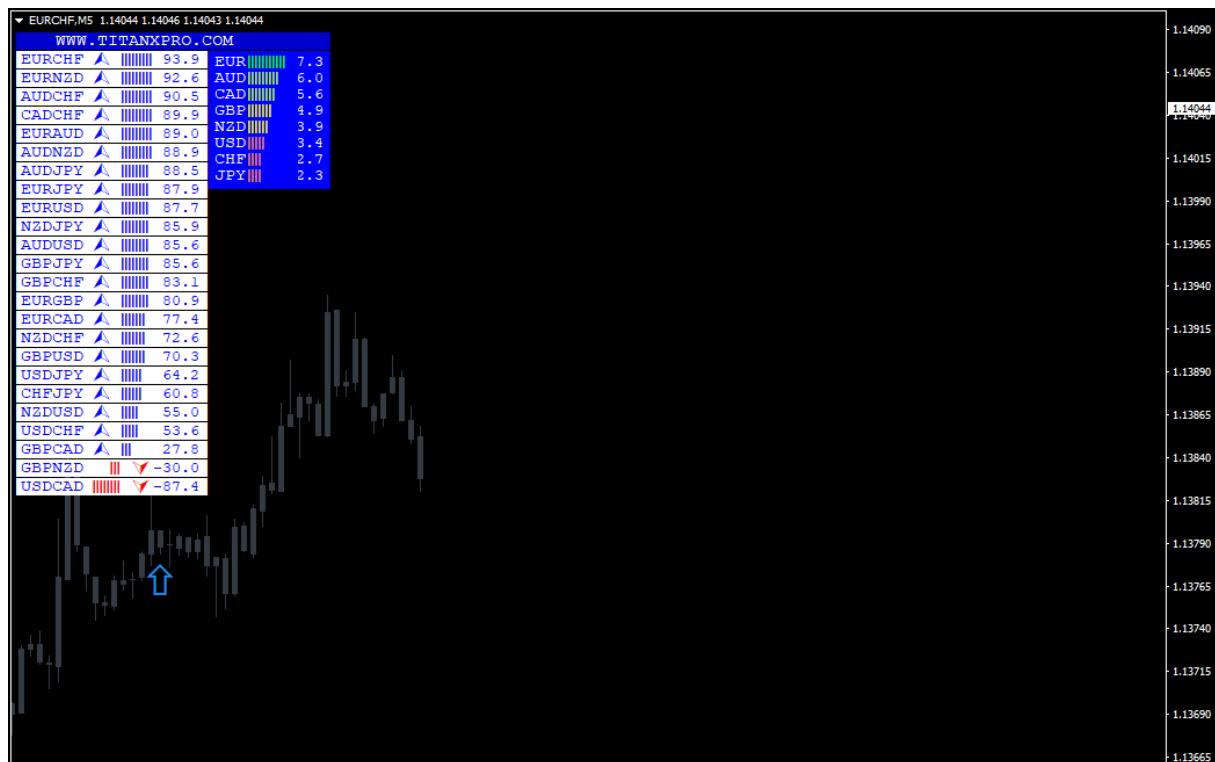


4. TRADES EXAMPLES. BUY TRADE.

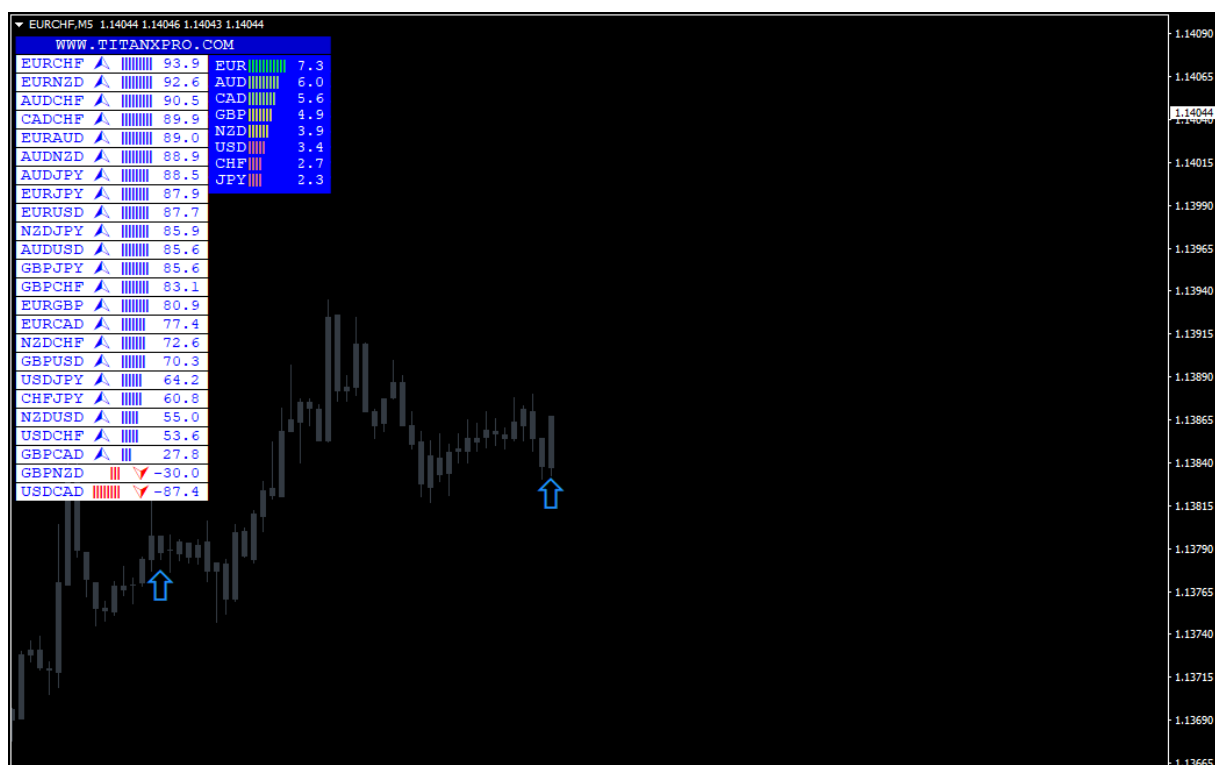
Let's take a look how buy trade looks like.



The market looks very bullish (most pairs are on the buy side). EUR is the strongest, CHF and JPY the weakest.



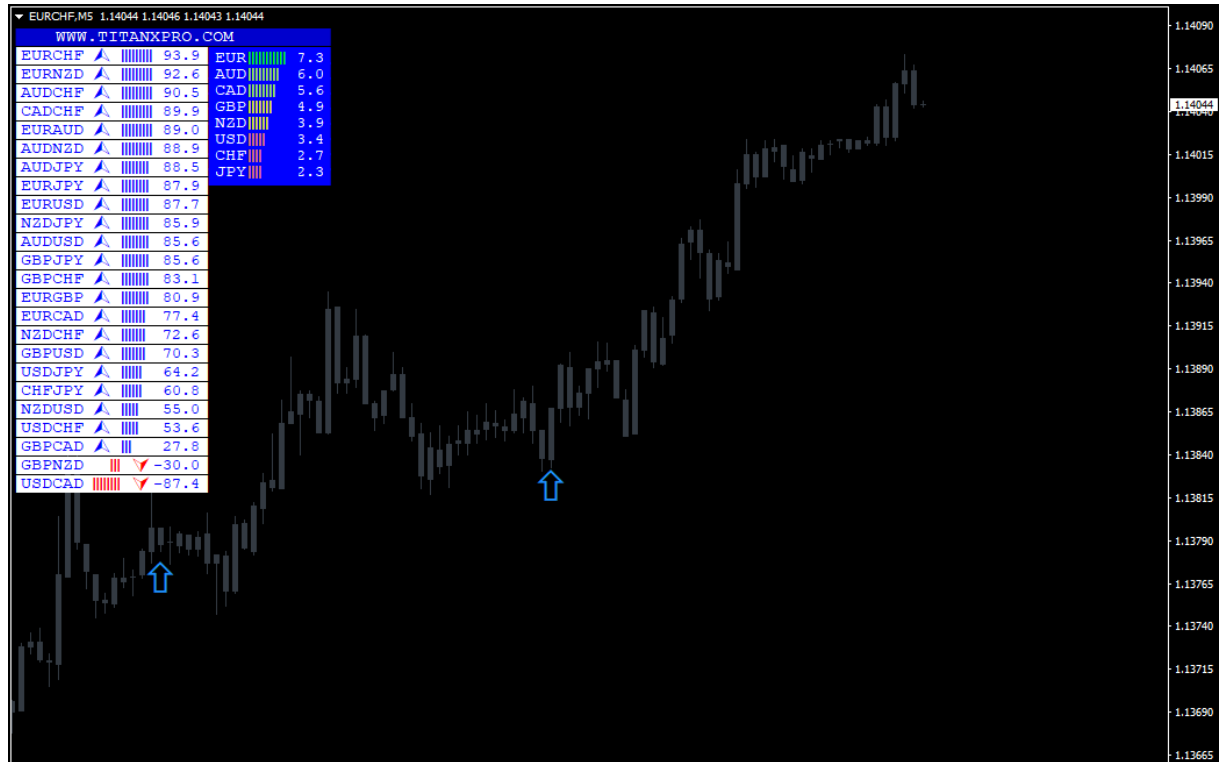
EURCHF produced already a nice buy signal. Let's wait for another blue arrow on this pair.



Market giving us the next opportunity to make a nice buy trade on this pair.

www.titanxpro.com

Close the trade on the opposite signal or nearest resistance level.



5.TAKE PROFIT AND STOP LOSS RULES.

Stop loss should be placed on the last swing below/above the entry candle.

Take profit can be realized at the nearest support/resistance area, round numbers or opposite signal.



PREFIX/SUFFIX SETTINGS

The system by default is ready for trading with standard pair symbols like EURUSD, GBPUSD, but if your broker provides some non standard pair symbols like for example EURUSDi or GBPUSDpro you need to put the suffix into indicator settings.

In order to put your suffix, place the '|' symbol and your broker suffix, for example: '|pro' into dashboard settings.

The | symbol can be found on the keyboard above 'enter' key.

If you encounter any problems let us know and we will set it up for you!

support@titanxpro.com



GENERAL TRADING TIPS

1. Before you take any trading signal generated by the system, check how the currencies looks like on the dashboard.
2. Take the signals according to the market direction. For example if the EUR is strong, take only BUY signals on EURUSD, or EURJPY.
3. Try to trade on the volatile sessions. Usually the market provides the most pips at European and US session.
4. Pay attention to the 'red' news in the market calendar. If the market is expecting important data, the range can be very low and signals weak.
5. Try to focus on the major pairs only. More exotic pairs like GBPNZD or NZDCHF can be very costly (spread wise).